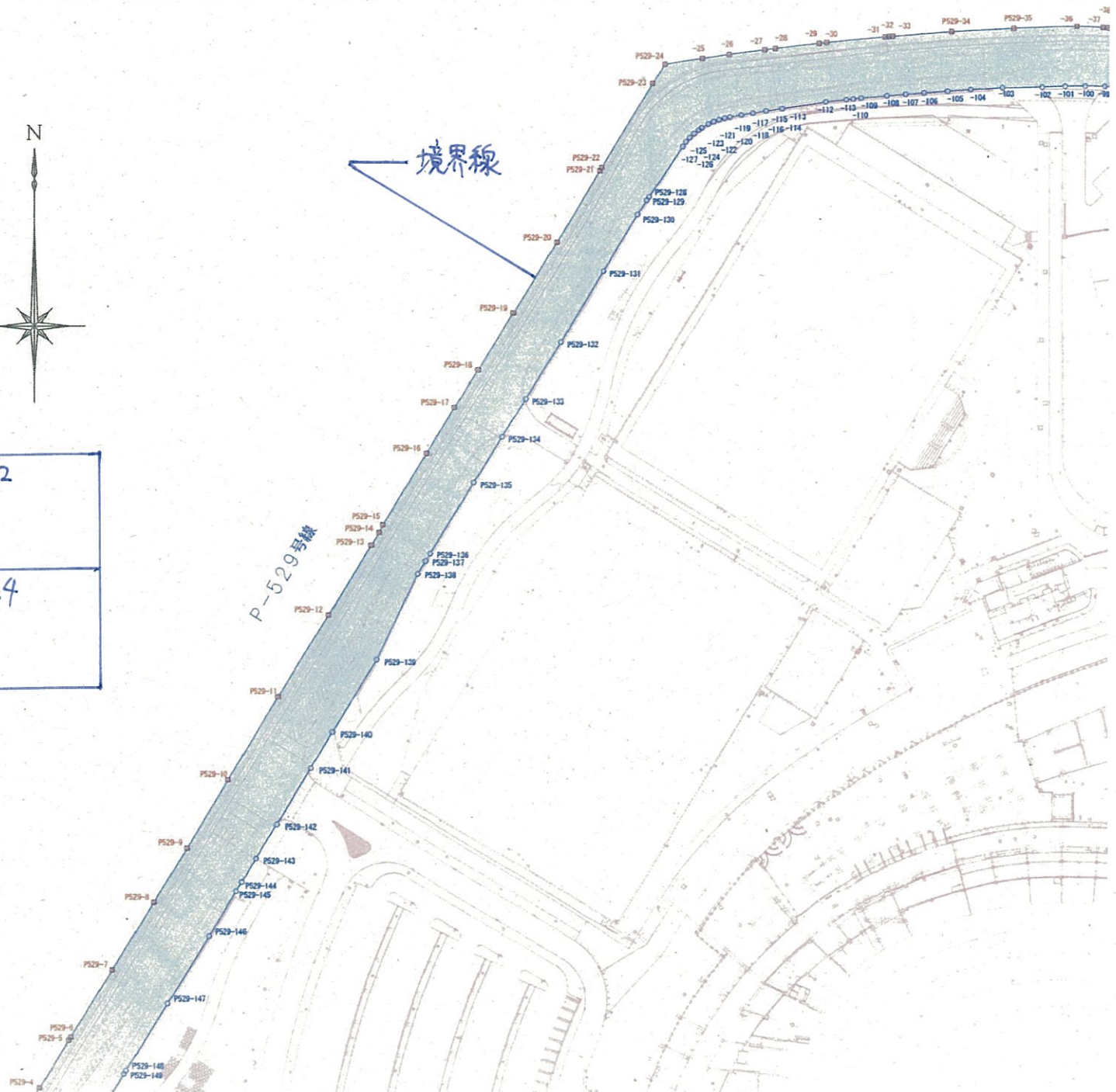
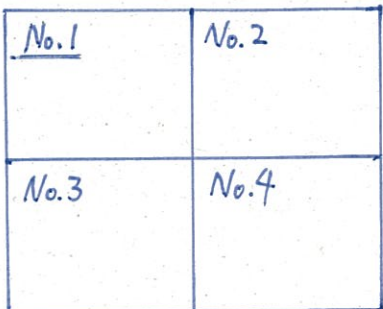


No.1

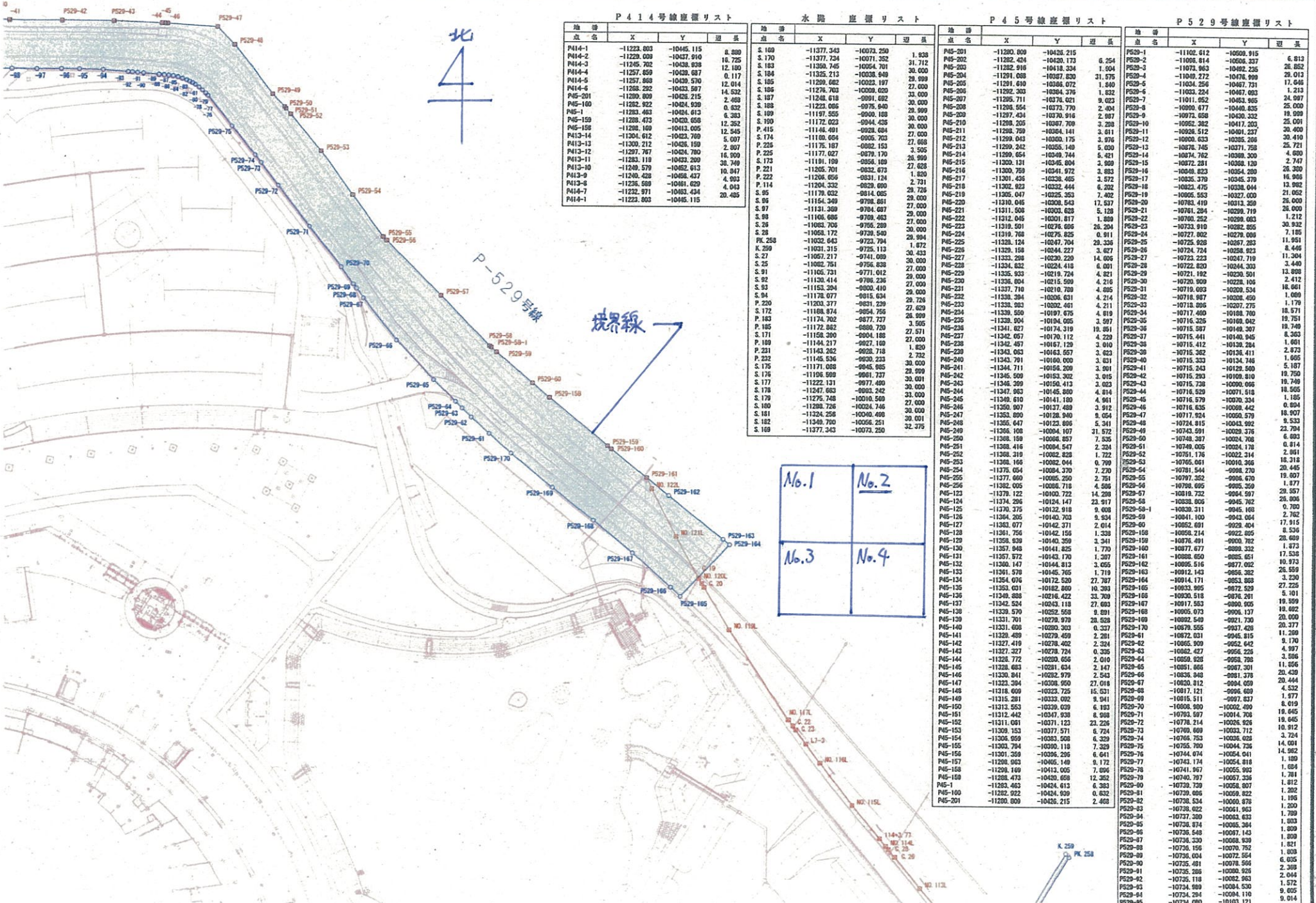
別図1 埼玉スタジアム2002

境界座標リスト			
点名	X	Y	距離
PS29-153	-11112.682	-10492.654	14.843
PS29-154	-11104.920	-10504.706	1.293
PS29-155	-11104.244	-10505.808	1.797
PS29-156	-11103.305	-10507.540	1.115
PS29-157	-11102.722	-10508.200	1.629
PS29-1	-11102.612	-10508.815	6.813
PS29-2	-11006.814	-10508.337	25.852
PS29-3	-11073.963	-10462.235	29.013
PS29-4	-11049.272	-10416.999	24.907
PS29-5	-11034.255	-10467.731	17.846
PS29-6	-11033.224	-10467.003	1.213
PS29-7	-11011.852	-10453.955	25.000
PS29-8	-10990.677	-10440.835	19.999
PS29-9	-10973.698	-10430.332	25.001
PS29-10	-10952.382	-10417.203	30.400
PS29-11	-10926.512	-10401.237	30.410
PS29-12	-10900.633	-10385.266	25.721
PS29-13	-10876.745	-10371.758	4.680
PS29-14	-10874.762	-10369.300	2.747
PS29-15	-10872.281	-10368.120	16.966
PS29-16	-10849.823	-10354.280	13.982
PS29-17	-10835.279	-10345.379	21.052
PS29-18	-10823.476	-10338.044	26.000
PS29-19	-10805.553	-10327.000	30.932
PS29-20	-10783.419	-10313.359	7.185
PS29-21	-10761.284	-10299.719	11.951
PS29-22	-10750.582	-10299.083	8.446
PS29-23	-10733.919	-10282.855	11.304
PS29-24	-10727.802	-10279.086	3.449
PS29-25	-10725.929	-10267.283	2.412
PS29-26	-10724.724	-10258.823	13.861
PS29-27	-10723.223	-10247.719	1.009
PS29-28	-10722.820	-10244.303	1.178
PS29-29	-10721.192	-10230.501	10.571
PS29-30	-10720.609	-10228.308	19.751
PS29-31	-10719.063	-10209.534	8.363
PS29-32	-10718.997	-10208.450	1.661
PS29-33	-10718.898	-10207.275	10.749
PS29-34	-10717.400	-10188.700	8.363
PS29-35	-10716.226	-10169.042	1.661
PS29-36	-10715.587	-10149.307	2.873
PS29-37	-10715.441	-10140.845	1.665
PS29-38	-10715.412	-10139.284	5.187
PS29-39	-10715.282	-10136.411	10.749
PS29-40	-10715.333	-10134.746	18.565
PS29-41	-10715.243	-10129.500	1.185
PS29-42	-10715.293	-10109.810	0.954
PS29-43	-10715.738	-10090.866	18.507
PS29-44	-10716.529	-10071.510	9.533
PS29-45	-10716.579	-10070.324	23.794
PS29-46	-10716.635	-10069.442	6.093
PS29-47	-10717.924	-10059.579	0.814
PS29-48	-10724.815	-10043.922	2.861
PS29-49	-10743.591	-10029.376	18.318
PS29-50	-10748.387	-10024.708	20.445
PS29-51	-10749.025	-10024.178	1.877
PS29-52	-10751.179	-10022.314	23.557
PS29-53	-10765.061	-10010.388	28.806
PS29-54	-10781.544	-9998.270	0.780
PS29-55	-10787.352	-9986.670	2.762
PS29-56	-10798.095	-9965.359	17.915
PS29-57	-10818.732	-9945.997	8.536
PS29-58	-10838.606	-9945.762	28.689
PS29-59-1	-10839.311	-9945.160	1.873
PS29-59	-10841.100	-9943.664	17.538
PS29-60	-10852.091	-9928.404	4.730
PS29-158	-10858.214	-9922.895	20.416
PS29-159	-10876.491	-9900.782	18.126
PS29-160	-10877.677	-9899.332	2.290
NO.122L	-10898.650	-9885.651	1.700
NO.121L	-10922.829	-9853.635	18.713
NO.121H	-10911.097	-9874.321	40.826
C.19	-10926.942	-9805.518	2.746
NO.120L	-10928.944	-9804.406	1.962
C.20	-10930.404	-9803.530	6.755
NO.119L	-10946.451	-9803.900	8.955
NO.117L	-10980.366	-9831.176	20.435
C.22	-10982.500	-9829.951	16.594
C.23	-10984.162	-9828.290	3.062
L-3	-10988.808	-9824.294	1.644
NO.116L	-10996.825	-9819.093	3.708
NO.115L	-11013.099	-9808.733	15.153
114-3.77	-11025.979	-9796.272	20.546
NO.114L	-11028.018	-9792.609	20.584
C.26	-11033.162	-9790.501	0.909
NO.113L	-11044.892	-9780.909	7.854
NO.112L	-11050.375	-9767.403	27.009
NO.111L	-11075.418	-9753.259	27.000
C.27	-11076.066	-9752.715	28.000
S.25	-11082.751	-9756.838	3.505
S.91	-11105.731	-9771.912	27.511
S.92	-11130.414	-9786.226	27.000
S.93	-11153.294	-9800.410	27.000
S.94	-11178.077	-9815.634	28.000
P.229	-11203.377	-9831.229	28.000
S.172	-11198.874	-9854.795	27.629
P.185	-11174.702	-9877.737	26.999
P.186	-11172.952	-9880.720	3.505
S.171	-11158.390	-9904.189	27.000
P.189	-11144.217	-9927.189	1.820
P.231	-11143.262	-9928.718	2.732
P.232	-11145.536	-9930.233	30.000
S.175	-11171.068	-9945.985	23.009
S.176	-11196.599	-9961.737	30.001
S.177	-11222.131	-9977.499	30.000
S.178	-11247.963	-9993.242	27.000



02公園 境界点網図

No. 2



P414号線座標リスト

地番	X	Y	辺長
P414-1	-11223.003	-10445.115	8.800
P414-2	-11229.009	-10437.910	16.725
P414-3	-11245.702	-10438.639	12.180
P414-4	-11257.659	-10439.637	0.117
P414-5	-11257.869	-10439.570	12.014
P414-6	-11268.292	-10433.597	14.532
P414-7	-11269.009	-10425.215	2.489
P414-8	-11262.922	-10424.590	6.832
P414-9	-11262.922	-10424.590	6.832
P414-10	-11263.463	-10424.613	6.383
P414-11	-11263.463	-10424.613	6.383
P414-12	-11263.463	-10424.613	6.383
P414-13	-11263.463	-10424.613	6.383
P414-14	-11263.463	-10424.613	6.383
P414-15	-11263.463	-10424.613	6.383
P414-16	-11263.463	-10424.613	6.383
P414-17	-11263.463	-10424.613	6.383
P414-18	-11263.463	-10424.613	6.383
P414-19	-11263.463	-10424.613	6.383
P414-20	-11263.463	-10424.613	6.383
P414-21	-11263.463	-10424.613	6.383
P414-22	-11263.463	-10424.613	6.383
P414-23	-11263.463	-10424.613	6.383
P414-24	-11263.463	-10424.613	6.383
P414-25	-11263.463	-10424.613	6.383
P414-26	-11263.463	-10424.613	6.383
P414-27	-11263.463	-10424.613	6.383
P414-28	-11263.463	-10424.613	6.383
P414-29	-11263.463	-10424.613	6.383
P414-30	-11263.463	-10424.613	6.383
P414-31	-11263.463	-10424.613	6.383
P414-32	-11263.463	-10424.613	6.383
P414-33	-11263.463	-10424.613	6.383
P414-34	-11263.463	-10424.613	6.383
P414-35	-11263.463	-10424.613	6.383
P414-36	-11263.463	-10424.613	6.383
P414-37	-11263.463	-10424.613	6.383
P414-38	-11263.463	-10424.613	6.383
P414-39	-11263.463	-10424.613	6.383
P414-40	-11263.463	-10424.613	6.383
P414-41	-11263.463	-10424.613	6.383
P414-42	-11263.463	-10424.613	6.383
P414-43	-11263.463	-10424.613	6.383
P414-44	-11263.463	-10424.613	6.383
P414-45	-11263.463	-10424.613	6.383
P414-46	-11263.463	-10424.613	6.383
P414-47	-11263.463	-10424.613	6.383
P414-48	-11263.463	-10424.613	6.383
P414-49	-11263.463	-10424.613	6.383
P414-50	-11263.463	-10424.613	6.383
P414-51	-11263.463	-10424.613	6.383
P414-52	-11263.463	-10424.613	6.383
P414-53	-11263.463	-10424.613	6.383
P414-54	-11263.463	-10424.613	6.383
P414-55	-11263.463	-10424.613	6.383
P414-56	-11263.463	-10424.613	6.383
P414-57	-11263.463	-10424.613	6.383
P414-58	-11263.463	-10424.613	6.383
P414-59	-11263.463	-10424.613	6.383
P414-60	-11263.463	-10424.613	6.383
P414-61	-11263.463	-10424.613	6.383
P414-62	-11263.463	-10424.613	6.383
P414-63	-11263.463	-10424.613	6.383
P414-64	-11263.463	-10424.613	6.383
P414-65	-11263.463	-10424.613	6.383
P414-66	-11263.463	-10424.613	6.383
P414-67	-11263.463	-10424.613	6.383
P414-68	-11263.463	-10424.613	6.383
P414-69	-11263.463	-10424.613	6.383
P414-70	-11263.463	-10424.613	6.383
P414-71	-11263.463	-10424.613	6.383
P414-72	-11263.463	-10424.613	6.383
P414-73	-11263.463	-10424.613	6.383
P414-74	-11263.463	-10424.613	6.383
P414-75	-11263.463	-10424.613	6.383
P414-76	-11263.463	-10424.613	6.383
P414-77	-11263.463	-10424.613	6.383
P414-78	-11263.463	-10424.613	6.383
P414-79	-11263.463	-10424.613	6.383
P414-80	-11263.463	-10424.613	6.383
P414-81	-11263.463	-10424.613	6.383
P414-82	-11263.463	-10424.613	6.383
P414-83	-11263.463	-10424.613	6.383
P414-84	-11263.463	-10424.613	6.383
P414-85	-11263.463	-10424.613	6.383
P414-86	-11263.463	-10424.613	6.383
P414-87	-11263.463	-10424.613	6.383
P414-88	-11263.463	-10424.613	6.383
P414-89	-11263.463	-10424.613	6.383
P414-90	-11263.463	-10424.613	6.383
P414-91	-11263.463	-10424.613	6.383
P414-92	-11263.463	-10424.613	6.383
P414-93	-11263.463	-10424.613	6.383
P414-94	-11263.463	-10424.613	6.383
P414-95	-11263.463	-10424.613	6.383
P414-96	-11263.463	-10424.613	6.383
P414-97	-11263.463	-10424.613	6.383
P414-98	-11263.463	-10424.613	6.383
P414-99	-11263.463	-10424.613	6.383
P414-100	-11263.463	-10424.613	6.383

水路座標リスト

地番	X	Y	辺長
S.160	-11377.343	-10073.250	1.938
S.170	-11377.724	-10071.352	31.712
S.183	-11359.745	-10054.701	30.000
S.184	-11325.213	-10038.940	29.999
S.185	-11299.682	-10023.197	30.000
S.186	-11276.703	-10009.620	30.000
S.187	-11248.618	-9991.692	30.000
S.188	-11223.005	-9975.840	29.999
S.189	-11197.555	-9960.108	29.999
S.190	-11172.022	-9944.426	30.000
P.415	-11144.491	-9928.784	27.000
S.174	-11102.654	-9916.763	27.000
P.225	-11175.187	-9902.153	27.000
P.225	-11177.027	-9879.170	3.505
S.173	-11191.199	-9856.180	27.000
P.221	-11205.701	-9832.473	1.820
P.222	-11206.656	-9831.124	2.701
P.114	-11204.332	-9829.620	6.701
S.95	-11179.032	-9814.085	29.729
S.96	-11164.949	-9798.461	27.000
S.97	-11151.309	-9784.667	29.000
S.98	-11168.686	-9769.463	30.000
S.28	-11083.706	-9765.289	30.000
S.28	-11069.172	-9739.540	29.994
PK.259	-11032.943	-9723.794	1.872
K.269	-11021.315	-9725.119	30.433
S.27	-11067.217	-9741.089	30.000
S.25	-11082.751	-9756.838	30.000
S.91	-11105.731	-9771.012	29.000
S.92	-11130.414	-9786.236	29.729
S.93	-11153.294	-9800.410	27.000
S.94	-11178.077	-9815.634	29.000
P.220	-11203.377	-9831.239	27.629
S.172	-11168.874	-9854.726	28.999
P.183	-11174.702	-9877.737	3.505
P.185	-11172.882	-9880.720	27.511
S.171	-11158.200	-9904.188	27.000
P.189	-11144.217	-9927.169	1.820
P.231	-11143.262	-9928.718	2.732
P.232	-11145.836	-9930.233	30.000
S.175	-11171.088	-9945.985	29.999
S.176	-11198.999	-9961.737	30.011
S.177	-11222.121	-9977.490	30.000
S.178	-11247.663	-9993.242	27.000
S.179	-11275.748	-10010.569	33.000
S.180	-11298.726	-10024.746	30.000
S.181	-11324.258	-10040.490	30.011
S.182	-11349.700	-10056.251	30.000
S.189	-11377.343	-10073.250	32.375

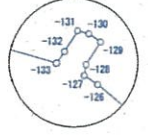
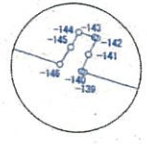
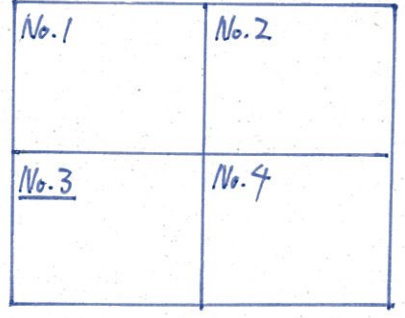
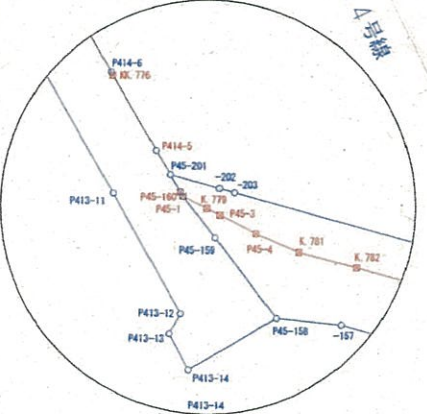
P45号線座標リスト

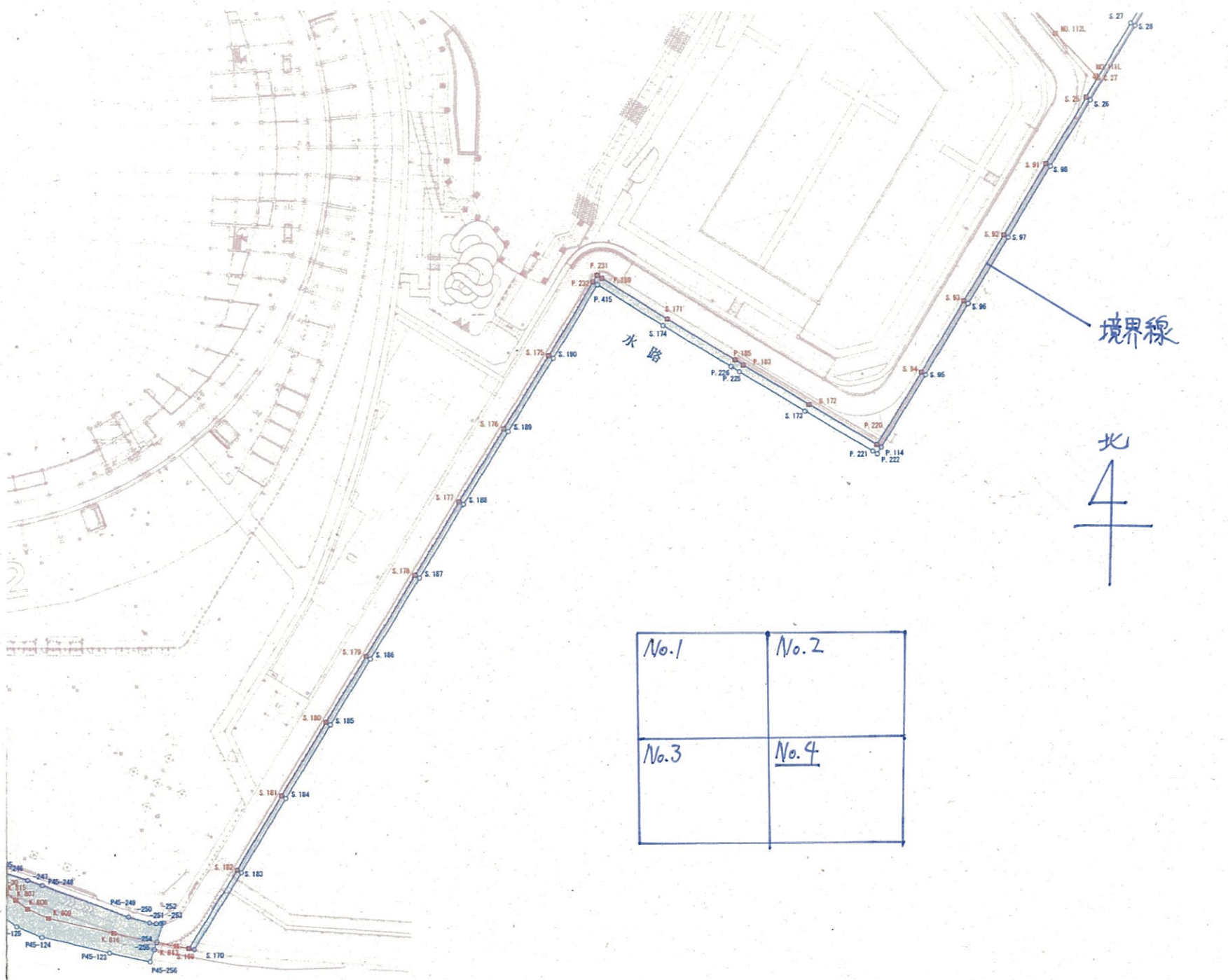
地番	X	Y	辺長
P45-200	-11280.009	-10426.215	6.254
P45-201	-11282.424	-10420.173	1.804
P45-202	-11282.916	-10418.334	31.976
P45-203	-11287.524	-10417.930	1.840
P45-204	-11291.610	-10418.334	1.832
P45-205	-11292.303	-10424.376	1.832
P45-206	-11295.711	-10430.021	2.404
P45-207	-11298.454	-10437.770	2.404
P45-208	-11299.434	-10437.916	2.987
P45-209	-11299.205	-10437.709	3.208
P45-210	-11298.759	-10434.141	3.161
P45-211	-11299.043	-10430.175	3.876
P45-212	-11299.242	-10425.149	5.620
P45-213	-11299.654	-10420.744	5.421
P45-214	-11300.131	-10416.804	3.809
P45-215	-11300.759	-10414.972	3.883
P45-216	-11301.425	-10412.465	3.572
P45-217	-11302.823	-10410.444	6.202
P45-218	-11305.407	-10408.353	7.402
P45-219	-11310.046	-10406.343	17.537
P45-220	-11311.508	-10403.828	5.128
P45-221	-11312.045	-10401.817	1.869
P45-222	-11318.501	-10376.686	26.204
P45-223	-11319.768	-10375.825	0.911
P45-224	-11320.124	-10374.704	29.326
P45-225	-11320.124	-10374.704	29.326
P45-226	-11320.124	-10374.704	29.326
P45-227	-11320.124	-10374.704	29.326
P45-228	-11320.124	-10374.704	29.326
P45-229	-11320.124	-10374.704	29.326
P45-230	-11320.124	-10374.704	29.326
P45-231	-11320.124	-10374.704	29.326
P45-232	-11320.124	-10374.704	29.326
P45-233	-11320.124	-10374.704	29.326
P45-234	-11320.124	-10374.704	29.326
P45-235	-11320.124	-10374.704	29.326
P45-236	-11320.124	-10374.704	29.326
P45-237	-11320.124	-10374.704	29.326
P45-238	-11320.124	-10374.704	29.326
P45-239	-11320.124	-10374.704	29.326
P45-240	-11320.124	-10374.704	29.326
P45-241	-11320.124	-10374.704	29.326
P45-242	-11320.124	-10374.704	29.326
P45-243	-11320.124	-10374.704	29.326
P45-244	-11320.124	-10374.704	29.326
P45-245	-11320.124	-10374.704	29.326
P45-246	-11320.124	-10374.704	29.326
P45-247	-11320.124	-10374.704	29.326
P45-248	-11320.124	-10374.704	29.326
P45-249	-11320.124	-10374.704	29.326
P45-250	-11320.124	-10374.704	29.326
P45-251	-11320.124	-10374.704	29.326
P45-252	-11320.124	-10374.704	29.326
P45-253	-11320.124	-10374.704	29.326
P45-254	-11320.124	-10374.704	29.326
P45-255	-11320.124	-10374.704	29.326
P45-256	-11320.124	-10374.704	29.326
P45-257	-11320.124	-10374.704	29.326
P45-258	-11320.124	-10374.704	29.326
P45-259	-11320.124	-10374.704	29.326
P45-260	-11320.124	-10374.704	29.326
P45-261	-11320.124	-10374.704	29.326
P45-262	-11320.124	-10374.704	29.326
P45-263	-11320.124	-10374.704	29.326
P45-264	-11320.124	-10374.704	29.326
P45-265	-11320.124	-10374.704	29.326
P45-266	-11320.124	-10374.704	29.326
P45-267	-11320.124	-10374.704	29.326
P45-268	-11320.124	-10374.704	29.326
P45-269	-11320.124	-10374.704	29.326
P45-270	-11320.124	-10374.704</	

S. 100	-11296.178	-10354.480	30.000
S. 101	-11324.258	-10400.488	30.001
S. 102	-11349.700	-10456.251	32.375
S. 109	-11377.343	-10573.250	4.549
K. 817	-11376.426	-10577.705	22.001
K. 816	-11371.901	-10582.254	23.123
K. 809	-11367.514	-10521.699	7.880
K. 808	-11364.050	-10529.076	5.258
K. 807	-11360.832	-10533.227	4.042
K. 815	-11358.321	-10536.394	2.939
P45-30	-11356.674	-10538.828	2.207
K. 814	-11355.424	-10540.647	1.842
P45-28	-11354.943	-10542.425	29.842
K. 805	-11354.801	-10543.157	11.062
K. 805	-11345.783	-10542.154	33.086
K. 804	-11342.698	-10515.696	26.949
P45-24	-11335.534	-10541.075	6.223
K. 802	-11333.898	-10547.031	3.606
P. 604	-11332.905	-10550.464	28.281
P45-21	-11324.793	-10577.648	0.335
P45-20	-11324.700	-10577.970	0.918
S. 157	-11324.447	-10576.852	1.003
P45-19	-11324.146	-10579.253	25.975
S. 150	-11316.988	-10504.872	1.899
K. 800	-11316.405	-10506.688	15.446
K. 794	-11311.708	-10521.383	10.055
K. 793	-11308.355	-10530.882	6.977
K. 792	-11306.376	-10537.052	9.799
K. 791	-11305.184	-10547.278	16.095
K. 790	-11304.234	-10553.345	3.977
K. 789	-11304.001	-10557.315	5.725
K. 788	-11303.841	-10559.685	7.236
K. 786	-11302.240	-10575.307	7.309
K. 785	-11300.251	-10589.675	5.725
K. 784	-11297.130	-10587.203	3.977
K. 783	-11294.439	-10594.010	7.309
K. 782	-11291.924	-10603.290	9.615
K. 781	-11289.123	-10610.359	7.255
P45-4	-11287.950	-10615.587	5.682
P45-3	-11286.720	-10620.082	5.000
K. 779	-11284.800	-10621.089	1.831
P45-1	-11283.483	-10624.613	3.249
P45-100	-11282.922	-10624.939	0.632
P414-5	-11277.871	-10627.989	5.900
K. 776	-11268.679	-10623.400	10.666
P414-3	-11251.314	-10643.349	20.009
K. 774	-11234.066	-10651.658	18.896
V. 773	-11222.707	-10646.536	12.226
K. 462	-11222.270	-10647.198	0.782
J. 461	-11219.301	-10651.281	5.048
P414-7	-11214.919	-10640.037	17.126
P413-8	-11216.589	-10641.629	3.023
P414-7	-11212.971	-10643.434	4.042
P413-7	-11210.547	-10676.059	14.680
P413-6	-11201.841	-10479.090	19.951
P413-5	-11184.370	-10487.215	18.272
P413-4	-11166.459	-10496.199	20.626
2506-1	-11155.779	-10502.595	14.161
2507	-11151.976	-10502.896	1.828
2508	-11150.161	-10503.011	1.827
2509	-11148.347	-10503.191	1.823
2511	-11144.688	-10503.353	3.663
2514	-11142.872	-10503.344	1.816
2517	-11141.049	-10503.248	1.826
2520	-11139.231	-10503.048	1.829
2521	-11137.426	-10502.810	1.821
2524	-11135.625	-10502.497	1.822
2527	-11133.832	-10502.115	1.833
2530	-11132.063	-10501.664	1.826
2533	-11130.318	-10501.145	1.821
2536	-11128.593	-10500.588	1.822
2539	-11126.923	-10499.902	1.794
2542	-11125.232	-10499.166	1.844
2545	-11123.575	-10498.409	1.822
2548	-11121.921	-10497.598	1.842
2558	-11116.500	-10494.405	6.291
P629-153	-11112.882	-10492.054	4.484

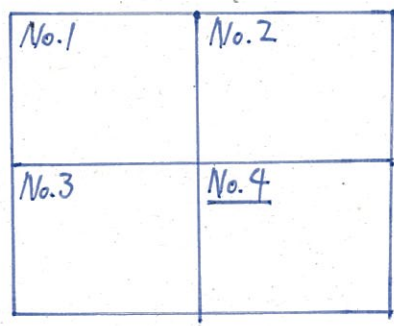


境界線





P529-97	-10733.917	-10118.957	9.577
P529-98	-10733.809	-10122.514	11.801
P529-99	-10734.234	-10140.310	6.278
P529-100	-10734.453	-10146.584	6.220
P529-101	-10734.670	-10152.800	7.303
P529-102	-10734.925	-10160.104	12.427
P529-103	-10735.203	-10172.526	7.204
P529-104	-10735.654	-10182.749	10.240
P529-105	-10736.317	-10189.938	7.223
P529-106	-10736.835	-10197.142	6.002
P529-107	-10737.322	-10203.124	5.854
P529-108	-10737.824	-10208.956	6.116
P529-109	-10738.586	-10217.038	2.547
P529-110	-10738.846	-10219.572	2.294
P529-111	-10739.000	-10221.654	5.236
P529-112	-10739.767	-10228.309	6.491
P529-113	-10741.924	-10242.049	13.908
P529-114	-10742.620	-10247.239	4.238
P529-115	-10743.285	-10251.424	3.609
P529-116	-10743.900	-10254.900	3.622
P529-117	-10744.564	-10258.541	1.759
P529-118	-10744.900	-10260.257	1.806
P529-119	-10745.364	-10262.004	1.790
P529-120	-10745.943	-10263.688	1.792
P529-121	-10746.091	-10265.326	2.388
P529-122	-10747.885	-10267.394	1.184
P529-123	-10748.566	-10268.363	1.805
P529-124	-10749.791	-10269.765	1.800
P529-125	-10750.959	-10271.054	1.791
P529-126	-10752.318	-10272.272	1.787
P529-127	-10753.763	-10273.272	19.111
P529-128	-10760.617	-10283.943	1.213
P529-129	-10770.624	-10294.620	5.259
P529-130	-10774.979	-10287.552	28.733
P529-131	-10792.624	-10298.438	28.000
P529-132	-10814.752	-10312.000	21.042
P529-133	-10832.600	-10322.126	13.882
P529-134	-10844.564	-10330.473	16.945
P529-135	-10858.001	-10339.344	28.468
P529-136	-10881.501	-10353.170	2.731
P529-137	-10883.828	-10354.600	4.683
P529-138	-10887.918	-10357.000	30.076
P529-139	-10914.865	-10370.205	26.671
P529-140	-10937.575	-10384.193	13.108
P529-141	-10948.831	-10390.910	20.546
P529-142	-10965.323	-10401.678	8.680
P529-143	-10978.860	-10408.430	12.534
P529-144	-10984.292	-10412.902	2.383
P529-145	-10987.177	-10414.728	16.674
P529-146	-11001.373	-10423.474	25.001
P529-147	-11022.688	-10435.588	25.006
P529-148	-11043.949	-10448.706	1.214
P529-149	-11044.982	-10450.343	17.635
P529-150	-11059.996	-10459.503	29.014
P529-151	-11084.698	-10474.812	6.016
P529-152	-11107.559	-10488.097	26.852
P529-153	-11112.682	-10492.054	16.843
P529-154	-11104.929	-10504.705	1.283
P529-155	-11104.244	-10505.808	6.016
P529-156	-11103.305	-10507.340	1.797
P529-157	-11102.722	-10508.230	1.115
P529-1	-11102.612	-10509.915	1.029



境界線
北

赤一境界線
青一区域線

No. 4