

Saitama Educational Inbound Handbook



1: Overview of Saitama

P3 : Basic information about Saitama

P4 : Saitama Educational Inbound

2: Saitama sightseeing spots

P5: Sightseeing spots in Saitama

P6-9: Central area(Saitama, Kawaguchi City etc.)

P10-12:East area (Kasukabe City etc.)

P13: North area(Fukaya City etc.)

P14-20: West area(Kawagoe, Tokorozawa, Hannō City etc.)

P21-23: Chichibu area(Chichibu City, NagatoroTown etc.)

3: Cultural exchange in school

P24: Cultural exchange in school

P25: Welcome ceremony

P26: Cultural experience

P27: Cooking and school lunch

P28: Examples of the experience programs

4: Homestay experience overview

P30: The flow of the days during homestay

P31: Homestay experience

P32-33 : Homestay experience

5: Reference Materials

<Accommodations by area>

P35-36 : North area, hotel examples

P37-38 : Central, East area, hotel examples

P39-40 : West area, hotel examples

P41-44 : Chichibu area, hotel examples

<Factory Tour>

The list of factories

P46 : Technologies

P47 : Food

<Kanto area recommended route>

P49: Kanto Itinerary 1|Kawagoe, Chichibu, Hakone & Tokyo

P50: Kanto Itinerary 2|Kawagoe, Chichibu, Yokohama & Tokyo

P51: Kanto Itinerary 3|Tokyo, Chichibu, Fujikawaguchiko, Kamakura, Yokohama & Tokyo

P52: Kanto Itinerary 4|Kawagoe, Chichibu, Karuizawa, Chiba & Tokyo



Overview of Saitama -basic information

- Population : 7.3 million (The 5th in Japan)
- Size : about 3,797km²
- Prefectural capital : Saitama city
- The number of city, town and villages
- Agricultural products : Leek, Spinach, broccoli



Access

■By bus

- Haneda airport to Omiya: about 60mins
- Narita airport to Omiya: about 90mins
- Omiya to Tokyo Disneyland: about 70mins
- Kawagoe to Fujikawaguchiko: about 110mins

■By train

- Shinjuku to Omiya: about 30mins
- Shinjuku to Kawagoe: about 35mins
- Ikebukuro to Kawagoe: about 30mins
- Ikebukuro to Omiya: about 25mins

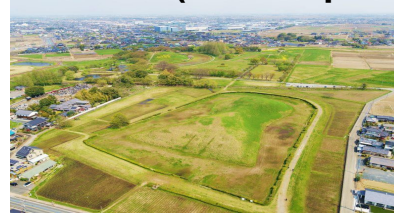
Statistics of Saitama educational inbound

Year	Number of schools participated	Number of students
2013	15	634
2014	16	638
2015	21	896
2016	42	1461
2017	42	1452
2018	48	1244
2019	38	1028
2023	11	486

*All projects were cancelled due to COVID-19 from the 2020 to 2021 financial years.

Sightseeing spots in Saitama

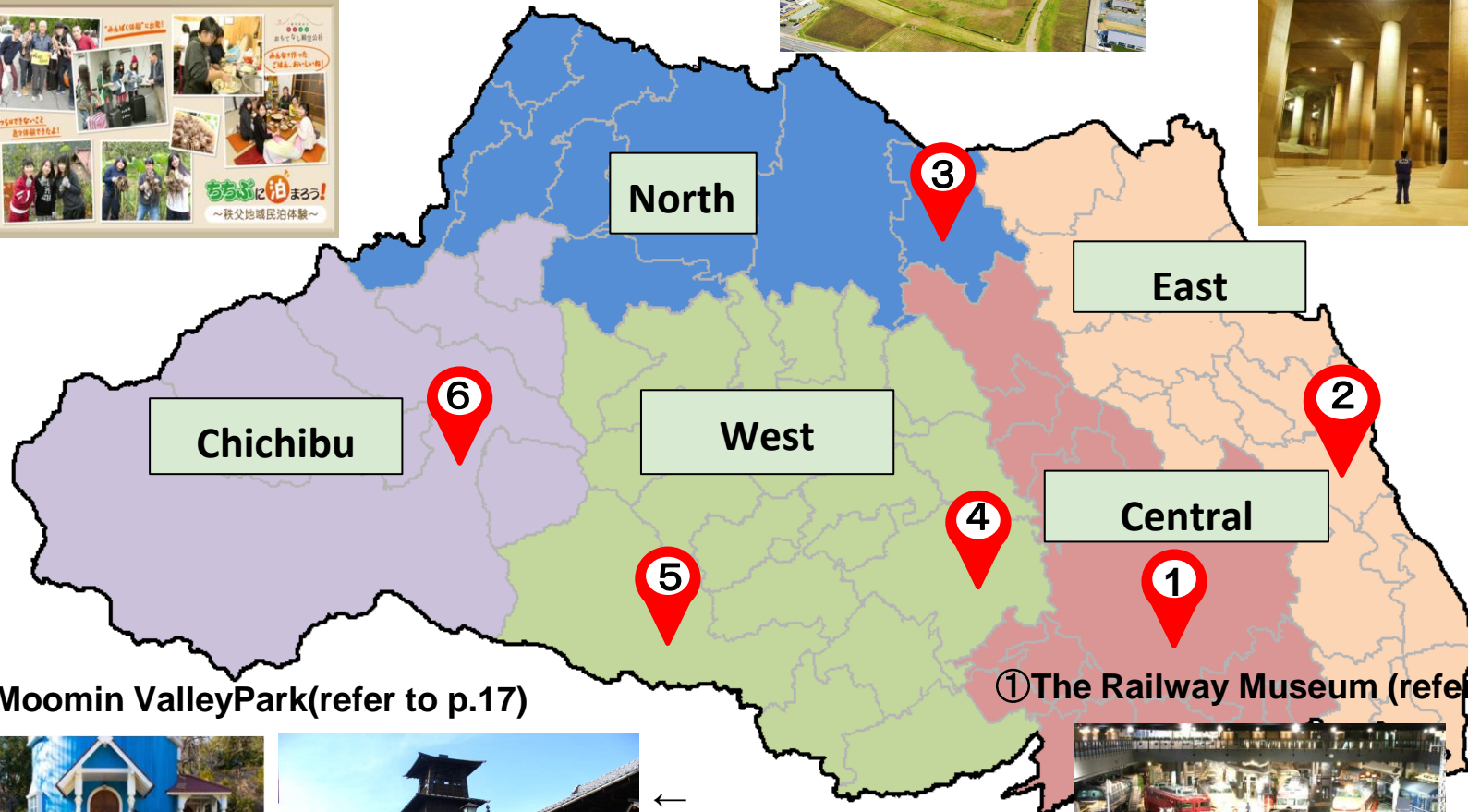
③ Museum of the Sakitama Ancient Burial Mounds(refer to p.12)



② Metropolitan Area Outer Underground Discharge Channel(refer to p.10)



⑥ Chichibu Homestay(refer to p.29)



⑤ Moomin ValleyPark(refer to p.17)



←
④ Kawagoe scenery of warehouse(refer to p.14)



① The Railway Museum (refer to p.6)

Central area(Saitama, Kawaguchi City, etc.)

①The Railway Museum (Saitama City)

Education

Sightseeing



In this Railway Museum, you can explore the history of Japanese railways from SL to Shinkansen with the exhibitions of various car designs. You can also experience the driving simulations and enjoy riding mini-trains, etc. As a privately owned museum, it's the biggest in Japan.

Central area(Saitama, Kawaguchi City etc.)

②Omiya Bonsai Art Museum(Saitama City)

Education



Omiya Bonsai Art Museum is **the first public bonsai museum in the world**. The museum collects and archive various documents and materials that relate to culture and history of bonsai and it continues to research bonsai.

In the bonsai garden, you can see the exhibitions of 40 to 50 bonsai and in the collection gallery, as an introduction to bonsai culture, you can see the monthly exhibitions of “Bonki(pots/vessels of bonsai)”, “Suiseki(small beautiful rocks)”, paintings and historical/folklore documents.

③Wakuwaku factory Glicopia EAST(Kitamoto City)

Education



Glico's sweets factory, started full operation in 2014.

It's a museum where you can learn about Glico's history and about confection through not only Pocky & Pretz's exhibitions and videos but also through factory tour and workshops(reservation-only)

Central area(Saitama, Kawaguchi City etc.)

④ Saitama Prefectural Disaster-Prevention Learning Center "SONA-E" (Konosu City)

Education



This facility was established to build a resilient community for the natural disasters. You can have fun learning and experiencing the countermeasures for the times of natural disasters such as earthquakes and storms.

【Earthquake simulation】

You can learn how to act for the earthquakes through experiencing the real shakes.



【Storm simulation】

You can actually feel and learn the force of the wind at the maximum wind speed; 30m/s.



【Extinguishing fire】

You can learn how to use extinguisher and the effective way to put out the fire in the early stage.



Central area(Saitama, Kawaguchi City etc.)

⑤Saitama Prefectural Museum of History and Folklore(Saitama City)

Education



The museum covers the history, folklore and arts and you can learn about the living and culture of Saitama. The workshop of making “Magatama” is popular(¥300/person).

⑥Skip City Sai-noNo-Kuni Visual Plaza(Kawaguchi City)

Education



You can learn about the principle, the history and the process of making films through hands-on exhibitions.

- Exhibitions of storyboards and properties of famous films
- Experience of filming, post-recording and sound effects

East area (Kasukabe City etc.)

①The Metropolitan Area Outer Underground Discharge Channel(Kasukabe City)

Education

Sightseeing



This is a 6.3 km underground discharge channel built at about 50m underground in the east Saitama prefecture.

This will store the water in the days of heavy rain and adjust the water that goes to the city area. You can join the tour to learn the role and the function of this facility. You can see various facilities such as surging tank.



East area (Kasukabe City etc.)

② Center for Environmental Science in Saitama(Kazo City)

Education



A core environmental science facility that holds learning facility and the laboratory.

The lab studies broad area from familiar environment to the global environment and works for international contribution.



East area(Kasukabe City etc.)

① Museum of the Sakitama Ancient Burial Mounds(Gyoda City)

Education



The museum preserves “Sakitama Kofun Cluster” which was built later 5th century to the early 7th century and shows precious cultural assets including the national treasure, the excavated articles from Inariyama Kofun.

In the park, you can hike up the mounds.

North area(Gyoda, Fukaya City etc.)

① Eiichi Shibusawa Memorial Hall(Fukaya City)



Education

You can get a lecture from the android of Eiichi Shibusawa.



Eiichi is in the limelight with 2021 TV series “Seiten wo tsuke” as a main character and also as the face of new ¥10,000 paper bill.

You can learn about him at Fukaya, his birthplace.

*He is said to be a founder of about 500 companies and called as “the father of Japanese economy”.

West area(Kawagoe, Tokorozawa, Hannō City etc.)

① Small Edo, Kawagoe

-bell tower and warehouse townscape(Kawagoe City)

Sightseeing



“Kura(warehouse)-zukuri”, the nostalgic house style was developed through Edo period as fireproof building.

It still has the atmosphere of Edo period which you cannot see in Tokyo. In 2007, it was selected as one of the “100 Japanese beautiful historical features”

Kawagoe is a very popular sightseeing spot, known as “small Edo, Kawagoe”.

It flourished as castle town and even today, you can enjoy the ancient townscape by walking around this area.



West area(Kawagoe, Tokorozawa, Hannō City etc.)

② Small Edo, Kawagoe

Sweets Alley and Kawagoe Festival Hall(Kawagoe City)

Sightseeing



The street with many nostalgic “dagashi(cheap snacks)” shops. In the early Showa period(1926-), there were more than 70 snack shops which produce, distribute and sell various sweets and snacks.

Today, about 20 shops sell mint and “Kintaro” candies and other Dagashi. People with any age can enjoy the nostalgic atmosphere.

In the hall, you can find two parade floats and documents exhibited and experience the powerful atmosphere of Kawagoe festival. In the exhibition hall, you can also listen to the “Ohayashi(festival music)” for certain days (about 20mins).



West area(Kawagoe, Tokorozawa, Hannō City etc.)

③ Small Edo, Kawagoe Hikawa Shrine and Kawagoe Castle Honmaru Goten Palace(Kawagoe City)

Sightseeing



The shrine is said to be built about 1,500 years ago and respected as the guardians of Kawagoe by the successive owners of Kawagoe castle. There are so many high spots such as 15m-tall Torii gate and the Edo style carvings(Important cultural property of Saitama)in the main player hall.

Built by Naritsune Matsudaira in 1848. It was an important north-defense of Edo in the edo period. The owners of the castle were senior statesman for generations.

You can still see the room of politics, large Tatami hall and gorgeous entrance with “Karahafu”style roof.



West area(Kawagoe, Tokorozawa, Hannō City etc.)

④Moomin Valley Park (Hannō City)

Sightseeing



Moomin family and their friends and the meeting of new discovery

You can re-experience the story of Moomin in 4 areas of this park. Why don't you see the charms of the Moomin stories and the philosophy of Tove Jansson, the author?



West area(Kawagoe, Tokorozawa, Hannō City etc.)

⑤Tokorozawa Sakura Town (Tokorozawa City)

Education

Sightseeing



In the facility, you can find Kadokawa Culture Museum which was designed by Kengo Kuma, who is a famous architect also designed new national stadium. The outer structure is 20,000 pieces of granite from China, hand-quarried and joined. You can enjoy the difference in the look from the different angles. It's five-stories with museum and anime-specialized museums, etc.



West area(Kawagoe, Tokorozawa, Hannō City etc.)

⑥Saitama Museum of Rivers (Yorii Town)

Education

Sightseeing



The museum was established in 1997 with interactive exhibitions with a central theme as Arakawa River, the water and people's living. You can learn about Arakawa River's history, folklore and nature through exhibitions.

The great water wheel which is the symbol of this museum is made of Nishikawa timber(Hinoki, the Japanese cypress tree from Saitama) and the biggest one in Japan.

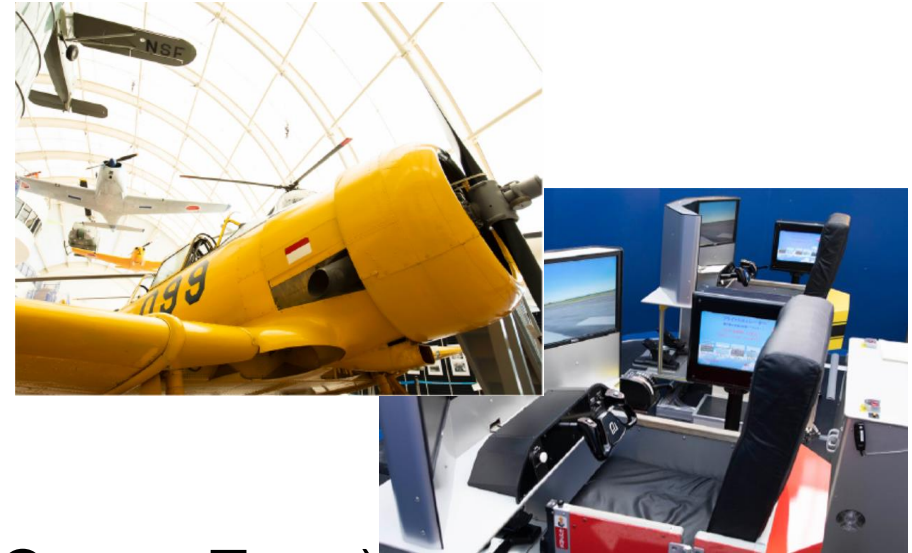
West area(Kawagoe, Tokorozawa, Hannō City etc.)

⑦ Tokorozawa Aviation Museum(Tokorozawa City)

Education

Sightseeing

The museum was established at the site which used to be the first airport in Japan, “Tokorozawa airport”. You can see the replica of made-in Japan airplane from the early days and learn about the history of airplanes in Japan.



⑧ Roadside Station Ogawamachi (Ogawa Town)



The Roadside Station offers the washi, or Japanese paper making experience. Washi became a UNESCO Intangible Cultural Heritage of Humanity.

Chichibu area (Chichibu City, Nagatoro Town etc.)

① Nagatoro Valley Rafting and the scenic layered rocks

Sightseeing



You can enjoy rafting with the traditional-style boat while seeing the beautiful scenic layered rocks(nationally designated natural monument) and canyon. **You can enjoy rafting throughout four seasons; shiba-sakura in the spring, cool breeze in the summer, colored leaves in the autumn, Kotatsu(heating system)-equipped boat in the winter.**

Chichibu area (Chichibu City, Nagatoro Town etc.)

Sightseeing

② Hitsujiyama Park(Chichibu City)



In this park, you can enjoy 9 kinds of shiba-sakura from late April to early May.
You can enjoy the beautiful scenery of flowers and Mt. Buko, the symbol of Chichibu in the background.

Chichibu area (Chichibu City, Nagatoro Town etc.)

Sightseeing

③ Icicle(Ogano and Yokoze Town)



You can enjoy the icicle from Jan. to Feb. every year.

At night, the area will be lit up so you can enjoy the fantastic scenery.

*Depending on the year and weather, the length of icicle varies.

Cultural exchange in school

An example of cultural exchange program:

10:00	Arrival to the school
10:15-10:45	Welcome ceremony(greeting from headmaster, exchange of souvenirs etc.)
10:55-12:45	Classes (English, calligraphy, music, Q&A sessions etc.)
12:50-13:20	School lunch(Bento)
13:25-14:15	Club activities(Judo, Tea ceremony, Kendo etc.)
14:30	Photo taking and send-off
14:45	Leave the school



A look of cultural exchange in school -Welcome ceremony



Introduction of school



Exchange of souvenirs



Welcome

All starts with the welcome ceremony and this is the first time when each school meets face to face. After the greeting from the headmaster and the student representative, each school will show a performance and exchange the souvenirs etc. to promote cultural exchanges.

A look of cultural exchange in school -Experience Japanese culture



Experiencing Japanese culture is the most popular program. Through the experience, the students will learn about the traditions and games from the old times.

The students of the host school will lead the program, teach the hosted students and sometimes been taught by them, enjoy the program together.



A look of cultural exchange in school -Cooking and school lunch



One of the class experience includes cooking class. The students can learn about Japanese food culture. they will learn the basic of Japanese cuisine through actual cooking process.

Also, having lunch together will deepen the relationships of the students and help them overcome the language barrier.

A look of cultural exchange in school -An example of the program

Activity type		Details
Content	Study	Class experience, School introduction by students in English, Chinese class by the guest students
	Culture	【Experience】 Calligraphy, Tea ceremony, Japanese drums, Karuta card game, Kendama, pottery, animation, Bean-throwing, origami, making tin badges, Japanese battledore, electric piano, wearing Yukata, Yukata dance 【Craft】 Japanese traditional craft, round fan, painting on battledore, lucky charms 【Performance】 Performance of traditional performing arts
	Sports	Judo, Kendo, Kyudo, long rope jumping, soccer
	Music	Orchestra, Chorus
	Food	Cooking of Japanese cuisines(Takoyaki, Okonomiyaki, Somen noodles etc.), school lunch, experiencing the cleaning routine after lunch
	Outside school	Sightseeing, stroll around the school, Visiting special support education schools, interact with students from neighboring elementary school
	Club activities	【Sports】 badminton, table tennis, volleyball, basketball,Kendo, Karate 【Culture】 Calligraphy, tea ceremony
	Others	Homestay in students' home



I Homestay experience overview

- The goal is that both the students and the host family can have a great time together.
- You will experience the daily lives of Japanese people starting from food preparation to preparing futon(mattress) as much as possible.
- You should act actively to be involved in each activity, that would nourish the mind of independence.
- We will host one school a day at maximum to maintain the quality of the experience.

Feature of the Chichibu homestay experience

1. Workshops with rich nature and culture
 - We provide workshops which make the best use of the rich nature, history and culture
2. Experiencing the live of countryside in Japan as part of a local family
 - You can experience the daily lives of Japanese countryside at host family's house
3. Create a bond and a trust
 - You will build a relationship of trust through communications and workshops with the host family
4. Workshops with the care for safety
 - With the backup of the local government, we will give special care for the health and the safety of the students.

Homestay experience -The flow

Day 1

12:00

Welcome to Chichibu!

Please enjoy the rich nature and warm people of Chichibu



13:30

16:30

Experience Program

Experience the program that you chose in advance



16:30

Welcome ceremony

You will meet your host here for the first time.



17:30

Homestay experience

You will be a part of the family and prepare the food and prepare futon beds together



Day 2

8:30

11:30

Food experience

You will cook and eat together. Some of the food is local dishes you cannot see elsewhere.



12:00

Leaving the village

You will leave the village with the ceremony. Say goodbye to your hosts.



Our family and our dog will welcome you warmly and we will try our best that you can make a good memory with us.



Our home is on top of a hill with a nice view of Chichibu basin. Please enjoy the life of countryside in Chichibu. We will all welcome you as a family.



Homestay experience



Let us introduce one of the important elements of educational trip, homestay. Chichibu area has homestay accommodations in Saitama prefecture and have an experience of hosting 60 people by homestay.

In Chichibu, three to four students will stay at a local home and be part of the family, enjoying cooking and walking around the neighborhood.

Unlike the stay in a hotel room, the students can learn the everyday life of Japanese people by doing the house chores like preparing the futon(blanket) mattress, etc.

Homestay experience -A look at a home



Homestay experience -A look at a home



Accommodations by area

In Saitama -North area, hotel examples



Hotel Heritage Shiki-no-yu



Fuyuzakura
no Yado
Kamiizumi



The list of accommodation for educational trip group

-Hotel examples in the north area

Facility name	Address	Phone number
Shikinoyu Onsen Hotel Heritage	228 Oegawa, Kumagaya-shi	+81-48-536-1212
Fuyuzakura no Yado Kamiizumi	1431-1, Yanoh Mikawa-machi Kodama-gun	+81-274-52-2100
Saitama Grand Hotel Honjo	2-2-1 Ekinan, Honjo-shi	+81-495-21-2111
Saitama Grand Hotel Fukaya	1-1-13 Nishijima-cho, Fukaya-city	+81-48-571-2111
Marroad-inn Kumagaya	1-64, Ginza, Kumagaya-city	+81-48-525-7611

In Saitama -Central and East area, hotel examples



Royal Pines Hotel Urawa

The list of accommodation for educational trip group

-Hotel examples in the central and the east area

Facility name	Address	Phone number
Royal Pines Hotel Urawa	2-5-1 Naka-cho, Urawa-ku, Saitama-shi	+81-48-827-1111
Marroad Inn Omiya	2-173 Sakuragi-cho, Saitama-shi	+81-48-645-5111
Palace Hotel Omiya	1-7-5 Sakuragi-cho, Omiya-ku, Saitama-shi	+81-48-647-3300
Hotel Brillante Musashino	Hotel Brillante Musashino	+81-48-601-5555
THE MARK GRAND HOTEL	3-2 Shintoshin, Chuo-ku, Saitama-shi	+81-48-601-1111

Accommodations in Saitama

-hotel examples in the west area



New Sunpia Saitama Ogose

The list of accommodation for educational trip group

-Hotel examples in the west area

Facility name	Address	Phone number
New Sunpia Saitama Ogose	700 Furuike, Ogose-machi Iruma-gun	+81-49-292-6111
Marroad Inn Hannō	105-8 Namiyanagi, Hanno-shi	+81-42-974-4000
Naguri Onsen Taishokaku	917 Shimonaguri, Hanno-shi	+81-42-979-0505
Kawagoe Prince Hotel	1-22 Shintomi-cho, Kawagoe-shi	+81-49-227-1111

Accommodations in Saitama

-Hotel examples in Chichibu area



Ikoinomura Heritage Minoyama



Minshuku Shizengo Higashizawa



Accommodations in Saitama

-Hotel examples in Chichibu area



Miyamoto-no-yu



Miyamotoke



Hotel Union Vert



The list of accommodation for educational trip group

-Hotel examples in Chichibu area

Facility name	Address	Phone number
Ikeinomura Heritage Minoyama	3415 Minano Minanomachi, Chichibu-gun	+81-494-62-4355
Minshuku Shizengo Higashizawa	1317-1 Ashigakubo Yokozemachi Chichibu-gun	+81-494-24-0800
Hana-no-Omotenashi Nagaikikan	449 Nagatoro Nagatoro-cho, Chichibu-gun	+81-494-66-1113
Wado Yunoyado	813 Kuroya, Chichibu-shi	+81-494-23-3611
Ojikaso	243 Sanyama, Oganomachi, Chichibu-gun	+81-494-75-0210
Ryokami Onsen Kokumin Shukusha Ryokamiso	707 Ryokamikomori Oganomachi, Chichibu-gun	+81-494-79-1221

The list of accommodation for educational trip group

-Hotel examples in Chichibu area

Facility name	Address	Phone number
Miyamotoke	510 Nagaru Oganomachi, Chichibu-gun	+81-494-75-4060
Nishiyatsu Onsen Miyamotonoyu	495-1 Nagaru Oganochi, Chichibugun	+81-494-75-2272
Hotel Union Vert	8371-3 Shimoyoshida, Chichibu-shi	+81-494-77-1110
Hotel Miyama	1294 Yamada, Chichibu-shi	+81-494-24-6311
Natural Farm City Noen Hotel	5911 - 1 Omiya, Chichibu-shi	+81-494-22-2000
Mitsumine Shrine Kounkaku	298-1 Mitsumine, Chichibu-shi	+81-494-55-0241

Factory Tour

List of factory tours -Technologies

Company name	Area	Product	Tour content
East Japan Railway Company Co., Ltd. Omiya Car Center	Saitama City(central)	Train carriage maintenance	<ul style="list-style-type: none"> · Disassembly of the wheels and the carriage, repair and assembly · Watch the test drive
Dainan Optical Co., Ltd.	Kawagoe City(west)	Optical glass (processing molding)	<ul style="list-style-type: none"> · Production line tour
MIKAMI Co.,Ltd.	Kawagoe City(west)	parts processing	<ul style="list-style-type: none"> · Factory tour · Company briefing
Iwasaki Eletric Co.,Ltd. Saitama factory	Gyoda City(east)	LED, HID lamp and other light products	<ul style="list-style-type: none"> · Watch introduction DVD · Production line of HID lamp
TAC Tajima Co., Ltd.	Hanyu City(east)	Aluminium products	<ul style="list-style-type: none"> · Overview of the factory · Production line tour

List of factory tours -Food

Company name	Area	Product	Tour content
Glicopia East	(Central) Kitamoto city	Sweets (POCKY 、 PRETZ etc.)	<ul style="list-style-type: none"> · Factory tour · Experience of making POCKY (fee required)
Yugeta Shoyu Ltd. Syoyu Okoku	(West) Hidaka city	Soy sauce, Chichibu miso	<ul style="list-style-type: none"> · Production line tour · Experience of filtering Soy sauce(if needed)
Yamaki Jozo	(North) Kamikawa-machi	Miso, Soy sauce, Tofu, Pickles, Dessert	<ul style="list-style-type: none"> · Tour of brewing and bottling process · Making of Tofu (fee required)
Musashino Aromatic Chemical Co., Ltd. Chichibu factory	(Chichibu) Chichibu city	Food flavor	<ul style="list-style-type: none"> · Production line tour
Agriculture Center Co., Ltd	(Chichibu) Oganomachi	Enomi, Maitake, Shiitake, Mashroom	<ul style="list-style-type: none"> · Production line tour of mashrooms

Kanto Itineraries

Kanto Itinerary 1 | Kawagoe, Chichibu, Hakone & Tokyo

Kanto Itinerary 1	
Day 1 Chiba & Saitama	AM: Arriving at Narita Airport
	PM: Exploring Kawagoe Warehouse District and staying in accommodation in Saitama Prefecture
Day 2 Saitama	AM: School exchange in Saitama Prefecture
	PM: School exchange in Saitama Prefecture and the homestay in Chichibu
Day 3 Saitama & Kanagawa	AM: Hands-on activities and experiences in Chichibu
	PM: Going to Hakone and staying in a Hakone Onsen Ryokan
Day 4 Kanagawa & Tokyo	AM: Exploring Lake Ashinoko, Owakudani and Odawara
	PM: Exploring Odaiba, Asakusa and staying in accommodation in Tokyo
Day 5 Tokyo	AM: Free day in Tokyo
	PM: Free day in Tokyo and staying in accommodation in Tokyo
Day 6 Chiba	AM: Exploring Narita
	PM: Departing from Narita Airport

Kanto Itinerary 2 | Kawagoe, Chichibu, Yokohama & Tokyo

Kanto Itinerary 2	
Day 1 Chiba	—
	PM: Arriving at Narita Airport and staying in accommodation in Chiba Prefecture
Day 2 Saitama	AM: Visiting the Railway Museum in Omiya
	PM: School exchange and staying in accommodation in Saitama Prefecture
Day 3 Saitama	AM: School exchange in Saitama Prefecture
	PM: Exploring Kawagoe Warehouse District and the homestay in Chichibu
Day 4 Tokyo & Kanagawa	AM: Exploring Chichibu
	PM: Exploring Yokohama and Odaiba staying in accommodation in Tokyo
Day 5 Tokyo	AM: Free day in Tokyo
	PM: Free day in Tokyo and staying in accommodation in Tokyo
Day 6 Chiba	AM: Exploring Narita
	PM: Departing from Narita Airport

Kanto Itinerary 3	
Day 1 Chiba	—
	PM: Arriving at Narita Airport and staying in accommodation in Chiba Prefecture
Day 2 Chiba & Tokyo	AM: Exploring Narita and a campus tour around a prestigious national university in Tokyo
	PM: Campus tour around a prestigious private university in Tokyo, exploring Roppongi and Tokyo Station and staying in accommodation in Tokyo
Day 3 Saitama	AM: School exchange in Saitama Prefecture
	PM: School exchange and staying in accommodation in Saitama Prefecture
Day 4 Saitama & Yamanashi	AM: Exploring Chichibu
	PM: Exploring Oshino Hakkai and staying in accommodation in Yamanashi Prefecture
Day 5 Yamanashi & Kanagawa	AM: Exploring Fujikawaguchiko
	PM: Exploring Kamakura and Yokohama and staying in accommodation in Kanagawa
Day 6 Tokyo	AM: Free day in Tokyo
	PM: Free day in Tokyo and accommodation in Tokyo
Day 7 Chiba	AM: Departing from Narita Airport
	—

Kanto Itinerary 4 | Kawagoe, Chichibu, Karuizawa, Chiba & Tokyo

Kanto Itinerary 4	
Day 1 Tokyo & Saitama	AM: Arriving at Haneda Airport
	PM: Exploring Kawagoe Warehouse District and staying in accommodation in Saitama Prefecture
Day 2 Saitama	AM: School exchange in Saitama Prefecture
	PM: Exploring Chichibu and homestay in Chichibu
Day 3 Nagano	AM: Skiing in Karuizawa
	PM: Skiing in Karuizawa and staying in accommodation in Nagano Prefecture
Day 4 Nagano & Saitama	AM: Exploring Karuizawa
	PM: School Exchange in Saitama Prefecture
Day 5 Chiba	AM: Visiting a theme park
	PM: Visiting a theme park
Day 6 Tokyo	AM: Free day in Tokyo
	PM: Free day in Tokyo
Day 7 Tokyo & Chiba	AM: Exploring Odaiba
	PM: Departing from Narita Airport

Contact information

Department of sightseeing, Saitama Prefecture

Mail : a3950-11@pref.saitama.lg.jp

Web : <https://www.pref.saitama.lg.jp/a0806/20200924.html>