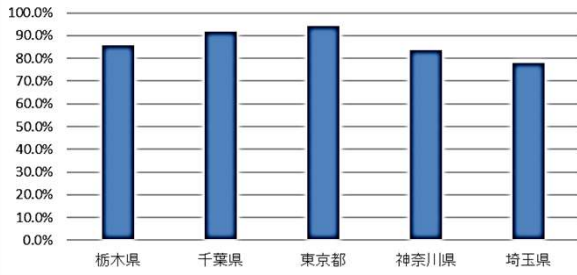
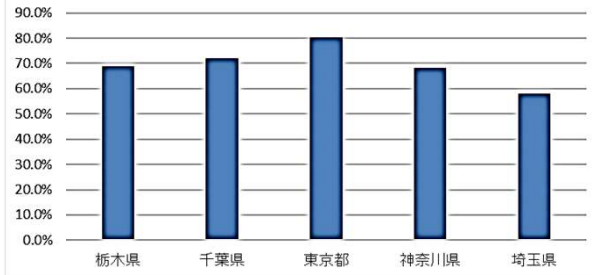


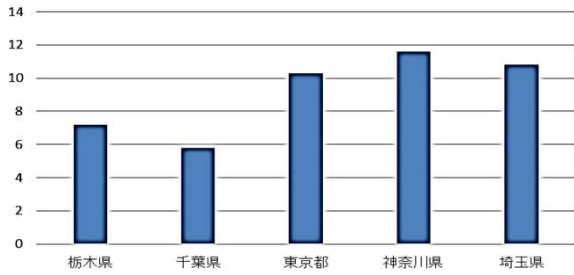
病床利用率
(令和元年度)



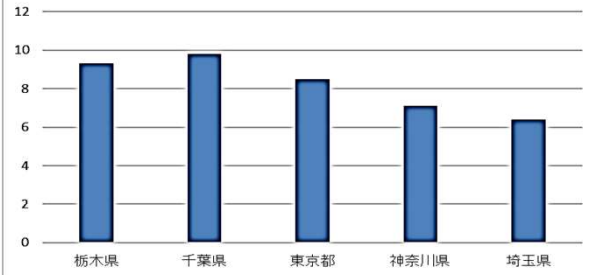
医業収支比率
(令和元年度)



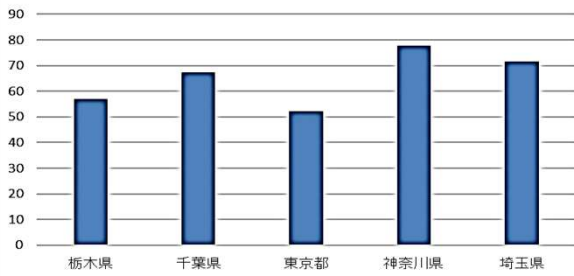
100床あたり職員数(医師)



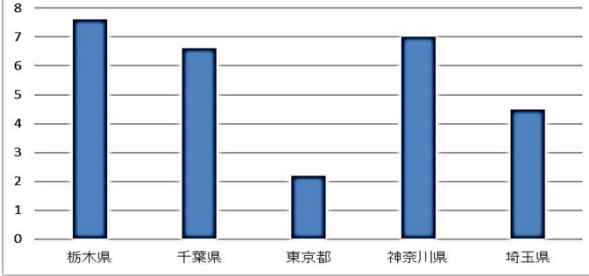
医師1人1日あたりの患者数(入院)



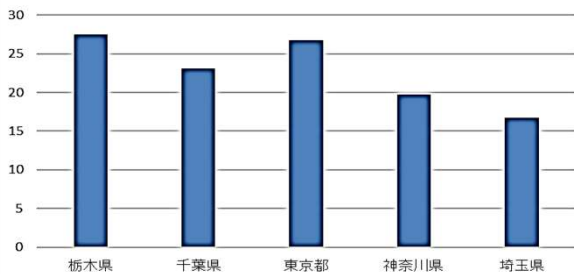
100床あたり職員数(看護師)



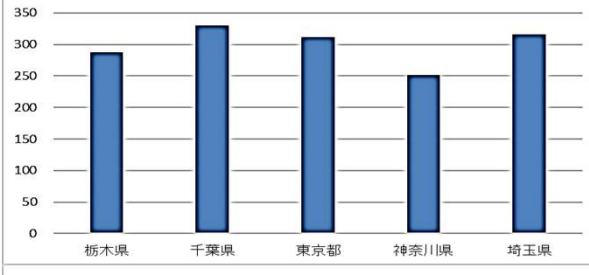
医師1人1日あたりの患者数(外来)



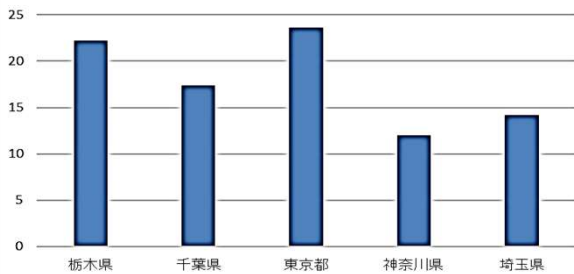
100床あたり職員数(PT)



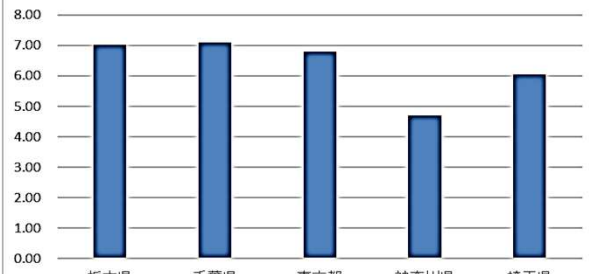
療法士1人月あたりリハビリ提供単位数



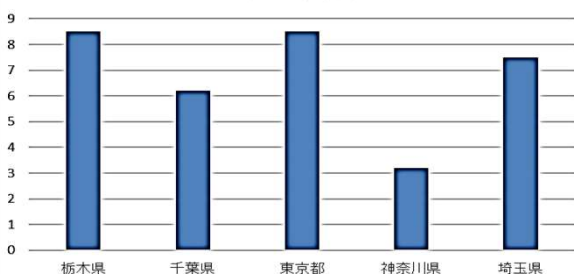
100床あたり職員数(OT)



患者1人あたり1日リハ提供数(回復期)



100床あたり職員数(ST)



患者1人あたり1日リハ提供数(その他病棟)

